

[www.horsefoodthebest.com](http://www.horsefoodthebest.com)

natural health.....

**VAN GORP DIERVOEDERS**

Zomerdijkweg 2

5145 PK Waalwijk

0031-(0)416 315770

[info@horsefoodthebest.com](mailto:info@horsefoodthebest.com)

**CONTENTS**

CONTENTS.....	2
<b>VAN GORP</b> DIervoeders .....	3
1. NATURAL EATING BEHAVIOUR .....	5
2. NUTRIENTS .....	5
3. DIGESTIVE TRACT .....	6
4. ENERGY .....	7
5. GUIDELINES FOR NUTRITIONAL REQUIREMENTS.....	7
6. PELLET ASSORTMEN.....	9
7. MIXEN ASSORTMENT.....	14
8. SPECIAL FEED.....	18
9. INDIVIDUAL PRODUCTS.....	21
10. OTHER PRODUCTS .....	21
10. SUPPLEMENTS.....	22
11. ANALYSIS OF PELLETS AND MIXEN .....	26



## VAN GORP DIERVOEDERS

**HORSEFOOD 'the best'** is a mixture of a large variety of tasteful and carefully selected feeding stuff in the form of pellets, compound feed products and feed additives. You can compose a balanced menu for your horse every day. Your horse really would like to exclusively eat tasteful, healthy and pure products!

For more than fifty years, with heart and soul the family business VAN GORP DIERVOEDERS has been in search of the very best at affordable prices.

The result is a healthy, powerful and satisfied horse and this is why can say together and full of pride:

**HORSEFOOD 'the best'**

The assortment offers high-grade and affordable quality for a healthy horse. This is confirmed by **Edward Gal, Hans Peter Minderhoud, Emmelie Scholtens, Kirsten Brouwer, Jan de Boer and en Tim Lips**.

These internationally known top riders have been feeding their horses with **HORSEFOOD 'the best'** horse fodder for years already.

The production facilities of **VAN GORP DIERVOEDERS** are located in Waalwijk.

The location has been optimally modernised and is up to today's requirements in the range of production and food security by using state-of-the-art tracking and tracing modules.

Based on the quality systems such as HACCP, GMP+ and the participation in SECUREFEED, the supply of high-grade and secure animal feed to our customers is ensured.







## I. NATURAL EATING BEHAVIOUR

Natural horse fodder mainly consists of grasses, herbs and water. Seeds and small shrubs are eaten by horses as well. During their search for feed or during feed intake, horses cover great distances in order to satisfy their nutritional requirements.

Every time, small amounts of feed rich in crude fibre are taken in. Throughout the day, alternating with phases of rest, about 14 hours a day are spent for eating.

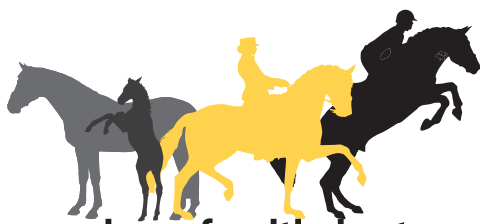
The digestive tract of horses is adjusted to digesting nutrients from feed which is rich in crude fibre.

This is why feeding roughage is very important - also with a view to the natural eating behaviour of a horse.

## 2. NUTRIENTS

Water, carbohydrates, fats, proteins, vitamins and minerals are the nutrients in a horse's fodder:

- ✓ Water is part of the general living requirements of horses. Water is important for digestion, for growth and for a possible milk production. A full-grown horse needs 5 litres of water per 100 kg body weight in order to maintain its life functions.  
Always depending on intensity of labour, milk production and environmental factors.
- ✓ Carbohydrates contain 80% of the natural diet of a horse and are mainly responsible for energy supply. Distinctions are made between non-structural carbohydrates (starch and sugar/cellulose and structural carbohydrates (fibres/cell wall).
- ✓ Apart from carbohydrates, fats are a source of energy for horses and they are important for the absorbability of fat-soluble vitamins.
- ✓ Proteins are the building blocks of the body. They are important for building muscles, connective tissue, hooves and coat. Moreover, proteins play an important part in hormone balance, for nutrient transport and in the regulation of chemical processes in the body.
- ✓ Vitamins and minerals are important for the metabolism of horses. Moreover, vitamins have influence on health, growth and reproduction. Minerals play an important part in the take-up of water and other substances, for bone growth and the functioning of muscles, enzymes and hormones.



[www.horsefoodthebest.com](http://www.horsefoodthebest.com)

### 3. THE DIGESTIVE TRACT

Fodder has to be digested in smaller individual parts for the body to take up the required nutrients.

This is achieved in the digestive tract which starts with the mouth and ends with the anus.

By way of chewing, food is ground in the mouth to particles having a size of less than 2 millimetres and saliva is produced. In contrast with human beings and dogs, saliva will only be produced when the horse is chewing. The smaller the food particles, the better these parts can be mixed with the saliva. The fine-ground feed then slides easier through the stomach. Apart from that, saliva is important to neutralise the acid in the stomach and in the small intestine.

.....INTENSIVE CHEWING THEREFOR IS OF ENORMOUS IMPORTANCE FOR EVERY HORSE.

The GULLET transports the bolus from mouth to stomach. This transport is achieved through the contraction of muscles which is also called peristalsis.

The STOMACH of a horse represents merely 10 % of the complete digestive tract and has a content of 5 to 15 litres. Thus, the stomach is very small. The stomach continuously produces stomach acid. This stomach acid is neutralised by the saliva produced during chewing.

#### THE STOMACH HAS DIFFERENT FUNCTIONS:

- ✓ Start of protein metabolism by means of enzymes
- ✓ Mixing the bolus with gastric juices
- ✓ Killing bacteria with stomach acid

After passing through the stomach, the bolus will get into the SMALL INTESTINE. The latter may be divided into 3 parts, namely the duodenum, the jejunum, and the ileum. The overall length is 21 metres.

#### FUNCTIONS OF THE SMALL INTESTINE:

- ✓ Further protein digestion
- ✓ Digestion of sugar; starch, fats, oils
- ✓ Absorption of different nutrients in the blood

The small intestine passes over into the large intestine. The large intestine as well consists of several parts, namely the appendix (caecum), the large colon and the rectum. The large intestine has an overall length of about 8 metres and a content of +/- 132 litres.

#### THE LARGE INTESTINE HAS SEVERAL FUNCTIONS:

- ✓ Fermentation (digestion by way of micro-organisms) of fibres
- ✓ Digestion of undigested material from the small intestine
- ✓ Reabsorbing of water
- ✓ Absorbing of vitamins B, fatty acids and some minerals
- ✓ Removal of undigested material (manure)

Finally, the LIVER and PANCREAS play an important part in the digestive process. The liver produces bile which is required for diminishing large globules of fat. The fact that there is no gall bladder; bile is continuously flowing into the small intestine. The pancreas produces several enzymes such as amylase, trypsin and lipase which are required for the digestion of carbohydrates, proteins and fat. The pancreas also plays a part in hormone balance.

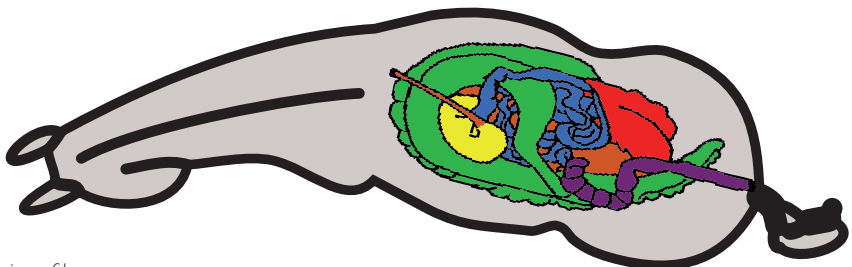


Figure 1: Top view of horse

## 4. ENERGY

Grass, haylage, hay and lucernes can be fed to horses as roughage. Roughage supplies sufficient energy and protein to cover the requirements of life-sustaining substances of a horse. In general, concentrated feed has to be fed as a supplement when roughage contains too little energy, protein, vitamins and minerals.

When a horse is working to a certain degree, concentrated feed will also be required as a supplement. A horse can maximally take up 2.5% of its body weight of dry matter from roughage and concentrated feed. The following plan indicates which nutrients are important for individual sports disciplines.

INTENSITY OF WORK	NUTRIENTS	SPORTS
Short intensive effort	Sugar Starch	Jumping Driving
Long effort Low intensity	Fibres Fats	Dressage Driving*

\* Marathon

## 5. GUIDELINES FOR NUTRITIONAL REQUIREMENTS

Nutritional requirements of a horse depend on the sex, the breed, the weight, the shape and the work to be performed. Weight and work determine a large part of the nutritional requirements of a horse.

The real weight can be determined by means of scales. In addition, the ideal weight can be estimated on the basis of a calculation. The following table shows some guidelines for the weight.

GUIDELINES CONCERNING WEIGHT:	
SHETLANDPONY	200 - 250 kg
PONY	350 - 500 kg
HORSE	500 - 700 kg

### EXAMPLE FOR CALCULATING THE WEIGHT:

Breast measurement (1) and trunk length (2) have to be known for the calculation.

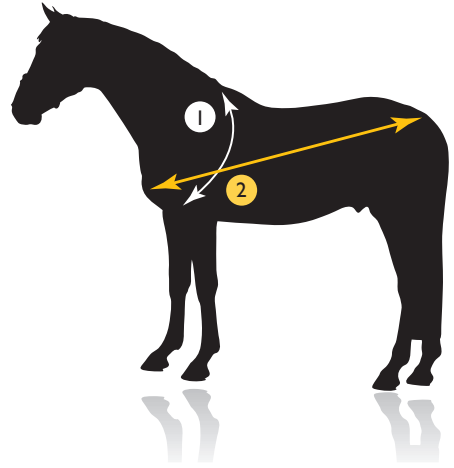


Figure 2, Example for calculating the weight

Breast measurement	210 cm
Body length:	171 cm
Standard value:	11.900

(the standard value is the same with every horse)

$$\begin{aligned}
 &\checkmark 210 \times 210 = 44.100 \\
 &\quad 44.100 \times 171 = 7.541.100 \\
 &\checkmark 7.541.100 : 11.900 = \mathbf{633 \text{ kg}}
 \end{aligned}$$

(The formula to be used to exactly calculate the weight of a horse is: breast measurement x breast measurement x body length: 11.900)

### ATTENTION:

This calculation does not take fat at the neck and at the hind leg into account

Apart from calculating the weight, it is important to pay attention to the horse's shape. Consider that feels soft and, in contrast, muscles feel hard. The ribs should be sensible and just be invisible.







# TIPS

## NUTRITION

- ✓ Make sure that your horse can always get clean and fresh water.
- ✓ Give your horse the correct fodder taking the extent of physical exercise into account.
- ✓ Roughage is the basis of the rations; 1.2% of the body weight
- ✓ Roughage must not be dusty or mouldy
- ✓ Hay should have a green or golden yellow colour
- ✓ Do not give more than 2 kg of concentrated feed per feeding
- ✓ Give concentrated feed within 3 hours before hard work
- ✓ Give feed at fixed times

## ACCOMMODATION

- ✓ Regularly clean all the stables, mangers and watering places and drinking troughs and provide a dry, soft and dust-free floor covering
- ✓ Do not use a hay rack every day
- ✓ Your horses should have exercise, free space, fresh air and light every day

## HEALTH

- ✓ Give your horses a de-worming treatment in time. For this purpose, consult your veterinary.
- ✓ Have your horse vaccinated at least once a year

## 6. PELLET ASSORTMENT

### HORSEFOOD *'the best'*

Based on experience, special knowledge and commitment it is possible to develop and manufacture a product of particularly high quality which can stand every comparison in the marketplace.

Nutrition recommendations are based on the level of physical exercise. To clarify this, the following table will inform you on the definitions used and on the guidelines applying to the several levels of physical exercise.

#### GUIDELINS ON THE LEVEL OF PHYSICAL EXERCISE:

Maintenance:	Horses/ponies not working
Light work:	Exercising in the riding arena, forest rides and leisure-time sports up to the light class. (Class E-A)
Medium work:	Competition class L-M, competition class S and higher (both jumping and dressage)
Hard work:	Eventing, driving, trotting race and horse race sports.

### What makes our pellets that special?

All the vitamins in our horse fodder are coated since the vitamin values decrease during pressing and storage. This means that the vitamins are provided with a protective coating. In this manner, vitamins remain stable longer and their values are kept for a longer period.

Moreover, copper chelate (organic copper) is used in all **HORSEFOOD *'the best'*** –concentrated feed. This form of copper is practically completely and directly taken up in the blood vessel. This helps to avoid unnecessary stresses in digestion and several organs.

In order to achieve a glossy coat and an optimized hoof quality, coated biotin is added. To increase the well-being and to strengthen the natural defences, natural herbs and zinc chelate (organic zinc) were used in the most **HORSEFOOD *'the best'*** - horse fodders.

The different pellets are described in this chapter in more detail. If not stated otherwise, the pellets are produced in a size of 7 mm. The figure behind every pellet form indicates the item number.

### ALL-ROUND PAARDENBROK (80)

Competitive pellets suited for all horse breeds having a low energy requirement. The pellets include an over-average volume of the required nutrients such that they can be fed as maintenance fodder. Even if the horse does some minor physical exercise, these pellets are suited as a supplement to roughage. Should performances (exercise) become necessary, this has to be taken into account in feeding accordingly.

- ✓ With a rich portion of vitamins, minerals and trace elements.
- ✓ Without oats

#### FEEDING RECOMMENDATION PER 100 KG BODY WEIGHT:

Maintenance	0.4-0.5 kg
Light work	0.5-0.7 kg

### PRESTATIEBROK (81)

Pellets with a high grain portion, a.o. oats, barley, maize and wheat. In connection with a EWpa-value of 0.96 and a high starch value, your horses get the energy volume required in order to achieve top performances.

The special combination with a generous content of vitamins and minerals enable the desired top performances in competitive sports.

- ✓ Low protein content
- ✓ High oats portion

The HORSEFOOD 'the best' Prestatiebrok have a limited crude cellulose consumption and a small amount of residual substances. With these quality pellets we can guarantee a powerful horse with dry bones.

#### FEEDING RECOMMENDATION PER 100 KG BODY WEIGHT:

Maintenance	0.2-0.3 kg
Light work	0.3-0.4 kg
Medium work	0.5-0.6 kg
Hard work	0.6-0.8 kg

### BASIS-SPORTBROK (82)

Have a look at the EWpa-value and you will see that these pellets can be used in a much broader range than the name "Basis" suggests. These pellets offer the advantage that you do not have to immediately use a different feed in case of an increase in physical exercise but you simply have to give a somewhat higher feed portion.

The price/performance ratio of these basis sports pellets is excellent.

- ✓ EWpa-value of 0.90
- ✓ Suited for all horse breeds doing minor work
- ✓ With all the important vitamin and minerals.

#### FEEDING RECOMMENDATION PER 100 KG BODY WEIGHT:

Maintenance	0.3-0.4 kg
Light work	0.4-0.5 kg
Medium work	0.5-0.7 kg

### CONDITIEBROK (83)

With a EWpa-value of 0.94, these are excellent allround pellets. They are excellently suited for horses performing riding activities even if higher demands are made regarding their capabilities. This is above all possible through the use of balanced nutrients, minerals and vitamins portions. With the right and tasteful raw materials, Horsefood "the best" Conditiebrok warrants a high-value quality food.

- ✓ Allround pellets with a EWpa-value of 0.94
- ✓ with a protein content of 11.3 %

These pellets give your horses a lot of good shape enabling them to perform on a high level. Perfectly suited for competitive sports, these pellets include everything a tournament ace needs. Broadly usable and therefore very recommendable.

#### FEEDING RECOMMENDATION PER 100 KG BODY WEIGHT:

Maintenance	0.3-0.4 kg
Light work	0.4-0.5 kg
Medium work	0.5-0.6 kg
Hard work	0.6-0.8 kg

**XP-EQ GISTBROK****(85)**

These are the most powerful sports pellets in our assortment. To be used when top and continuous performances are to be rendered. These pellets possess an energy value that is particularly suited for horses that exercise hard and have to possess the energy for a great stamina.

- ✓ Enriched with yeast cultures to optimise the digestion of crude cellulose and for a better feed efficiency.
- ✓ Avoid the development of lactic acid in the horse
- ✓ Faster recovery after hard work
- ✓ Horses remain relaxed in the body

Additional feeding of several additives now is superfluous with this product. For a controllable horse full of energy!

**FEEDING RECOMMENDATION PER 100 KG BODY WEIGHT:**

Maintenance	0.2-0.3 kg
Light work	0.4-0.5 kg
Medium work	0.6-0.7 kg
Hard work	0.8-1.0 kg

**REFIT ENERGY BROK****(185)**

The pellet feed for horses performing sports.

These pellets provide horses with easy available energy enabling them to supply the performances required in sports.

- ✓ Leads to a fast recovery of the muscle tissue
- ✓ Reduces the heart frequency
- ✓ Strengthens the immune system
- ✓ High calcium, phosphor and magnesium contents

ReFit Energy pellets contain a natural antioxidant supply and provide all vitamins and minerals in an optimised way for top-level sports. Allround sport pellets - and your horse is fit every day!

**FEEDING RECOMMENDATION PER 100 KG BODY WEIGHT:**

Maintenance	0.2-0.3 kg
Light work	0.4-0.5 kg
Medium work	0.6-0.7 kg
Hard work	0.8-1.0 kg

**DIGEST CONTROL BROK****(163)**

A high-quality mixed pellet feed for active sport horses.

This pellet feed contains a high portion of crude fibers such that the existing fibers can stimulate the chewing activity. The chewing activity is required for saliva production which in turn is responsible for neutralizing the stomach acid in the stomach. A good nutrient uptake is of essential important for the health and the performance of a horse

- ✓ Optimized glucose and starch content
- ✓ High fat content
- ✓ Rich in vitamins and mineral substances
- ✓ Contains yeast cultures and spelt

Horsefood Digest Control Brok is a species-appropriate concentrated feed for all horse breeds. The existing essential amino acids warrant the correct protein balance. The percentage of oil is responsible for a gradual release of energy. The added linseed is a natural source of omega fatty acids. In connection with abundant roughage you get a feed ration meeting the requirements of the natural feeding behaviour of horses.

**FEEDING RECOMMENDATION PER 100 KG BODY WEIGHT:**

Maintenance	0.20 - 0.25 kg
Light work	0.25 - 0.30 kg
Medium work	0.30 - 0.35 kg
Hard work	0.35 - 0.45 kg

**JAARLING / MERRIEBROK (84)**

These pellets have been specially developed for breeding mares and yearlings up to an age of 2.5 years. Feed the Jaarling/Merriebrok to your pregnant mares from the 3rd month before the birth of the foal and during lactation. The foal will get "Veulenkorel" up to the age of six months. Afterwards it will change over to the jaarling/merriebrok such that the foal will get an optimal support for its further development after the juvenile growth. At the age of  $\pm$  2.5 years, you will change over to HORSE-FOOD prestatie-, conditie- or basissportbrok.

- ✓ Fully adequate and high nutrients, minerals and vitamins contents
- ✓ Energy and protein content adjusted to the needs of pregnant and lactating mares and young horses
- ✓ Vitamin E content of 300 mg
- ✓ Includes folic acid
- ✓ Includes copper and zinc chelate for an optimized absorption rate in blood

**FEEDING RECOMMENDATION PER 100 KG BODY WEIGHT:**

Yearlings	0.5-0.8 kg
2 year old horses	0.4-0.7 kg
Pregnant and lactating mares	0.5-0.7 kg

**MERRIEBROK - BÈTA (87)**

Supplies the necessary 'fuel' for a mare to let a healthy and strong foal grow and develop in her body. These pellets are particularly suited for mares that will be bearing hard.

- ✓ Fully adequate nutrients, minerals, vitamins and amino-acid contents
- ✓ With coated beta carotene and folic acid
- ✓ 300 mg of coated vitamin E
- ✓ Particularly protects the young foetus

These pellets are also suited for stallions.

**FEEDING RECOMMENDATION PER 100 KG BODY WEIGHT:**

0.5-0.7 kg

**VEULENKORREL START (86)**

Horsefood „the best“ Veulenkorel Start includes all the nutrients for an optimal juvenile growth of a foal which are necessary to become a healthy, strong and powerful horse. This granulate includes grain, milk powder and digestible soy beans. The Veulenkorel Start are good to start with solid food.

- ✓ High vitamin portion for an optimal juvenile growth.
- ✓ With copper chelate
- ✓ Includes folic acid
- ✓ Vitamin E content of 300 mg

The added copper chelate is an organic copper form and thus can be better absorbed by the blood. These pellets are made in a size of 5 mm.

**FEEDING RECOMMENDATION PER DAY:**

Foals from $\pm$ 3 weeks to $\pm$ 1 year	0.8 kg.
--	---------

Afterwards, gradually feed jaarling/ merriebrok.

**KERNMIXBROK (90)**

Pellets for horses that are mainly fed with haylage and/or grain and require additional vitamins and minerals.

- ✓ 3 times higher dosage of vitamins, minerals and trace elements.
- ✓ With natural herbs, zinc chelate and coated biotin

Correctly dosed, they are excellently suited for horses that require vitamin and minerals doses every day.

**FEEDING RECOMMENDATION PER 100 KG BODY WEIGHT:**

Maintenance	0.1 kg
Light work	0.2 kg
Medium work	0.3 kg



**MAIS-LIJNZAADBROK (335)**

These pellets developed in practice let horses gain weight and supply a lot of energy. Moreover, these pellets are very tasteful and thus easy to feed. The Horsefood Mais-Lijnzaadbrok do not include any vitamins and thus can be fed with other pellets.

- ✓ Starch content 53%
- ✓ Large oil content

These pellets are made in a size of 5 mm.

**FEEDING RECOMMENDATION PER DAY:**

0.5 - 1.0 kg in addition to the normal ration

or

1.0 - 2.0 kg additionally, normal ration to be reduced by 1 kg

**BIOLOGISCHE PAARDENBROK (29513)**

These biological horse pellets are produced under the EKO Quality Seal according to SKAL Standard.

This means: no use of artificial fertilizers and pesticides, without genetic engineering and chemical treatment.

Because of the selection of an EWpa-value of 0.90, these 5mm pellets can excellently be used in all fields of horse sports.

**FEEDING RECOMMENDATION PER 100 KG BODY WEIGHT:**

Maintenance	0.3-0.4 kg
Light work	0.4-0.5 kg
Medium work	0.5-0.6 kg
Hard work	0.6-0.8 kg



## 7. MIXEN ASSORTMENT

**HORSEFOOD 'the best'** has an assortment of tasteful and powerful mixtures.

Provided with all the necessary vitamins and minerals and manufactured with due care and expertise, they offer every horse or pony a tasteful and healthy meal.

A mixture often has a lower weight than pellets.

Thus we recommend to weigh the desired feed portion in advance. The intended feed portion is stated behind every product. All mixtures are complete feeds with all the necessary vitamins and minerals. However, they may be fed in connection with pellets as well.



### OMEGA - 3 POWER - MIX

(7001)

Top-level sports mixture, suited for many disciplines. With an energy value of 0.97 best suited when top performance is required. For horses that perform heavy physical labour and require a great stamina with the energy being released gradually. Nutrients, minerals and vitamins contents are adjusted to top-level sports. Omega-3 unsaturated fatty acids provide a powerful athlete!

- ✓ Enriched with yeast cultures for a better digestion of the crude cellulose and for an optimized feed efficiency.
- ✓ With extruded linseed
- ✓ Avoids the development of lactic acid in the body of the horse
- ✓ 450 mg vitamin E for the muscles
- ✓ Gradual and long-lasting energy supply for a great stamina

Because of the fast recovery after heavy physical strain the horse remains relaxed in the body.

FOR A CONTROLLABLE HORSE FULL OF ENERGY!

#### FEEDING RECOMMENDATION PER 100 KG BODY WEIGHT:

Maintenance	0.2-0.3 kg
Minor work	0.3-0.4 kg
Medium work	0.5-0.6 kg
Hard work	0.6-0.8 kg



### SPEED - MIX

(7003)

A quality mixture for explosive energy.

A suited feed mixture for top-level sports on the basis of whole grains and a large portion of kibbled grains such as black oat and extruded maize.

Sugar and starch quantity are matched. In the Horsefood Speed-Mix, nutrients, minerals and vitamins contents are adjusted to powerful horses. For sports horses that have to possess explosive energy!

- ✓ Includes pea flakes
- ✓ With prebiotics and probiotics
- ✓ 450 mg vitamin E

#### FEEDING RECOMMENDATION PER 100 KG BODY WEIGHT:

Maintenance	0.3-0.4 kg
Minor work	0.4-0.5 kg
Medium work	0.5-0.6 kg
Hard work	0.6-0.8 kg



**FIT - MIX****(7005)**

A tasteful mixture for horses performing minor to medium labour. Balanced because of core pellets, spelt, lucerne and bran. This is why this mixture is suited to be fed as full feed with a basis made of roughage.

- ✓ With oats
- ✓ Rich in vitamins and minerals
- ✓ Contains fenugreek

**FEEDING RECOMMENDATION PER 100 KG BODY WEIGHT:**

Maintenance	0.3-0.4 kg
Minor work	0.4-0.5 kg
Medium work	0.5-0.6 kg
Hard work	0.6-0.8 kg

**EASY - MIX****(7007)**

A barley mixture which is rich in digestible energy. The Horsefood Easy-Mix is a mixture without oats for horses performing minor to medium labour. This mixture optimally supports the shape of the horse while the temperament of the horse remains controllable.

- ✓ With all vitamins and minerals
- ✓ With 0.5% magnesium
- ✓ For horses with a lot of temperament

**FEEDING RECOMMENDATION PER 100 KG BODY WEIGHT:**

Maintenance	0.3-0.4 kg
Minor work	0.4-0.5 kg
Medium work	0.5-0.6 kg
Hard work	0.6-0.7 kg

**KRUIDENSTRUKTUUR - MIX****(7009)**

A herb mixture which is easily digestible because of the use of grain flakes, drier carrots, pea flakes and bran. Additional lucernes in the form of pellets and stems provide sufficient crude cellulose. With chicory fibres and inulin as prebiotics. A herb mixture suited for every horse!

- ✓ Low sugar content
- ✓ EWpa-value of 0.95
- ✓ With Omega-3 and Omega-6 for a horse willing to perform
- ✓ With herbs

**FEEDING RECOMMENDATION PER 100 KG BODY WEIGHT:**

Maintenance	0.3-0.4 kg
Minor work	0.4-0.5 kg
Medium work	0.5-0.6 kg
Hard work	0.6-0.7 kg

**GRANENMIX - COMPLEET****(7013)**

The most important feature of this grain mix is the fact that particularly much energy in the form of starch is available. The body can absorb this energy quickly and liberate explosive forces for the labour required.

- ✓ With whole grains
- ✓ For quickly available energy
- ✓ Includes white and black oats
- ✓ High vitamin E content of 400 mg

Moreover, the Granenmix-Compleet has a limited protein and sugar content and contains linseed oil for all horse breeds that perform minor to hard labour.

**FEEDING RECOMMENDATION PER 100 KG BODY WEIGHT:**

Maintenance	0.3-0.4 kg
Minor work	0.4-0.5 kg
Medium work	0.5-0.6 kg
Hard work	0.6-0.7 kg



**GRAANVRIJ-MIX (7006)**

Alfalfa is the basic raw material in the Horsefood Graanvrij-Mix. In this manner, the crude fiber content will be lifted to the desired level. As the name already says, this is a muesli without grain and rich in crude fiber, vitamins and minerals. Because of the low sugar and starch content very well suited for horses that tend to develop a hyper-acidity in stomach and bowels.

- ✓ Low energy and molasses-free
- ✓ Tasteful muesli with carrot flakes and peas flakes.
- ✓ Contains chicory as a source for pectin and inulin as prebiotics for intestinal health.

Especially for horses with food-related metabolic disorders that have to get grain-free food.

**FEEDING RECOMMENDATION PER 100 KG BODY WEIGHT:**

Maintenance:	0.2-0.3 kg
Minor work:	0.3-0.4 kg
Medium work:	0.4-0.5 kg

**APPEL - MIX (7015)**

This magnificent mixture contains a rich assortment of maize and barley flakes, lucernes, and small carrot and apple pieces. The green lucerne stems make this mixture a real delicacy for a horse.

- ✓ A magnificent mixture
- ✓ With natural sugars
- ✓ With dried small apple pieces

The Appel-Mix can be used as a complete feed but also as a reward for the horse.

**FEEDING RECOMMENDATION PER 100 KG BODY WEIGHT:**

Maintenance	0.3-0.4 kg
Minor work	0.4-0.5 kg
Medium work	0.5-0.6 kg
Hard work	0.6-0.8 kg

**GROW - MIX M&V (7011)**

A special mixture which was developed for pregnant and lactating mares and the growing foals (up to 1.5 years). This mixture is complete with all grains (kibbled and/or popped) and has been provided with all components. These components are transferred to the foal and in this way a healthy foal growth is guaranteed.

- ✓ A special mare and foal mixture
- ✓ Prebiotics and probiotics
- ✓ With additional yeast cultures for the digestibility of the crude cellulose and for a better feed efficiency
- ✓ With folic acid

**FEEDING RECOMMENDATION PER 100 KG BODY WEIGHT:**

Maintenance of mares	0.4-0.5 kg
Pregnancy of mares	0.6-0.7 kg
Lactating mare	0.7-0.8 kg

**ALL IN ALL PER DAY:**

Foals from 3 weeks:	1.0-1.5 kg
Foals from 9 months to 1.5 years :	2.0-3.0 kg

**SLOBBERMEEL (941)**

Horsefood 'the best' Slobbermeel is easy to prepare with water and can be taken in by horses without any effort. It is a complete fodder for horses that need energy and it contains a high vitamin - mineral portion. Moreover, it is suited as a means to achieve weight gain - particularly through the contents of maize and linseed. Horsefood "the best" Slobbermeel also contains a lot of bran and rolled grain. A really magnificent reward for every horse!

- ✓ EWpa-value of 1.00
- ✓ Starch content of 40%
- ✓ High fat content of  $\pm 7,5\%$

**MIXING RATIO:**

1 kg Slobbermeel with 1 litre of hot water  
Let it cool down to lukewarm and then feed it completely.  
Freshly prepare every feed portion.

**FEEDING RECOMMENDATION PER 100 KG BODY WEIGHT:**

Quickly available Energy:	0.2 kg
In addition to the daily ration.	
Weight gain:	0.4 kg
Deduct this quantity from the daily ration.	





**MULTIBEET SENIOR - MIX****(7018)****ONLY TO FEED SOAKED!**

The Horsefood MultiBeet Senior-Mix has been specially developed for ponies and horses that have less or poorly functioning teeth. The muesli contains beet- and chicory pulp, as a result of which this feed can also be supplied as roughage substitute.

- ✓ High protein content suitable for horses that difficult keep their weight.
- ✓ Low starch content ensures that the risk of disruption of the intestinal flora in the caecum and colon is kept as low as possible.
- ✓ Added Inulin and yeast cultures such as pre- and probiotics provide good support for intestinal health.
- ✓ Contains high proportion of vitamins and minerals
- ✓ Extra tasty for horses with eating problems.
- ✓ Due to the quietly released energy also suitable for horses with temperament.

At a reduced digestion efficiency and/ or worse functioning teeth, an all-in-one feed, for a healthy, full and controllable horse!

**FEEDING RECOMMENDATION PER 100 KG BODY WEIGHT:**

Horses on rest:	0.3-0.4 kg
Horses at work:	0.4-0.6 kg

ASK our ADVISERS for ADVICE if your horse has digestive problems.

**HAPPY SUMMER-MIX****(7008)**

Particularly high-grade quality mixture, especially for sensitive horses. Low sugar and starch content, high content of linseed and soya oil, and a high vitamin and mineral content. The mixture contains easily digestible carbohydrates and well digestible crude cellulose.

- ✓ With selected kieselguhr (diatomaceous earth)
- ✓ With yeast cultures
- ✓ Every trace elements, above all zinc, copper and selenium are abounding.
- ✓ This mixture offers everything to give the horse a good support.

The Happy Summer - Mix contains 7 strong and functional herbs such as ginkgo, stinging nettle, oregano, garlic, marjoram, thyme and basil.

**FEEDING RECOMMENDATION PER 100 KG BODY WEIGHT:**

Maintenance	0.4-0.5 kg
Minor work	0.5-0.6 kg
Medium work	0.6-0.8 kg
Hard work	0.8-1.0 kg



FOR A  
HEALTHY,  
POWERFUL  
AND  
BALANCED HORSE!

8. SPECIAL FEED

**BIX-PEQ KORREL • 4 • 25 KG (7730)**

This granulate is a completely fermented yeast culture and supplies a very effective source for the body's own bacteria. The metabolites released during fermentation provide an outstanding feed value. This contributes to an improved feed efficiency.

BiX-PeQ Korrel is a very rich breeding ground for the body's own bacteria and optimally effective in the large intestine. Better nourished bacteria break down the feed easier and ensure that more nutrients are available for the animal.

An early hyperacidity of muscles is avoided and horses recover faster after sports performances.

- ✓ Supports the intake of roughage, is helpful with problems
- ✓ Provides a better growth, a better development and recovery after physical strain
- ✓ Contributes to the fact that the horse is powerful and in good shape

BiX-PeQ is a 100% natural product and only includes raw materials of plant origin.

**FEEDING RECOMMENDATION PER 100 KG BODY WEIGHT:**

10 g per 100 kg body weight a day



**FIBER COMPLETE - MIX • 20 KG (7454)**

A complete roughage mix of high-grade raw materials with all the vitamins and minerals a horse needs every day. Some functional components such as fenugreek and fermented yeast cultures were added. Yeast cultures ensure that crude fibre is converted better and more effective which in turn will have a favourable influence on the early acidification of muscles.

- ✓ For horses that already possess (too) much energy themselves
- ✓ For fast eaters because of the high crude cellulose portion
- ✓ Constant quality
- ✓ Very low sugar content
- ✓ Contains linseed oil
- ✓ Mixture without oats and barley

**FEEDING RECOMMENDATION PER 100 KG BODY WEIGHT:**

1 kg per 100 kg body weight (per day). As a basis, always give hay/straw.



CONTENTS IN KG OF THE PRODUCT	EWPA	RE	VREP	RV	RC	AS	ZET	SUI	VIT.A	VIT.D3	VIT.E	VIT.B	BIOTINE	CA	P	MG	NA	CU	ZN
	Art. nr.	%	%	%	%	%	%	%	IE	IE	MG	√	MCG	%	%	%	GR	MG	MG
7454	0,82	13,9	10,1	8,0	23,5	9,3	11,0	4,5	15.500	1.550	200	√	125	1,6	0,3	0,2	0,2	9	52
4153	0,63	11,6	8,6	5,3	14,0	19,6	9,8	2,9	75.000	15.000	1000	√	850	1,6	1,0	0,9	1,1	40	400
7773	0,30	5,7	2,5	5,5	2,1	6,5	7,0	2,0	400.000	80.000	4000	√	40.000	15,0	5,0	3,0	2,2	600	1800
7162	0,84	30,5	22,2	4,5	27,3	8,0	12,5	3,7	54.000	5.400	690	√	400	1,2	1,0	0,9	0,1	30	180

**LIJNZAAD KANT & KLAAR • 5-20 KG (7020)**

A product already prepared for you, ready to be eaten. Lijnzaad Kant & Klaar is heated under a very high pressure and at a high temperature such that the existing hydrogen cyanid is eliminated. Hard pellets, without dust which avoids pouring.

- ✓ For the metabolism
- ✓ Contains inulin as a prebiotic
- ✓ Increases the vitamin E content
- ✓ Slowly released energy (Omega-3) for all endurance sports
- ✓ For a horse in good shape

**FEEDING RECOMMENDATION PER 100 KG BODY WEIGHT:**

Maintenance	10 g
Light work	20 g
Medium work	30 g
Hard work	40 g
Foals	150 g per day
Pregnant mares (during lactation)	300 - 500 g per day

\* Horses which are too lean because of a disturbed intestinal flora (digestion) or sand in the intestines should eat. I

**VITA HORSE KORREL • 5-25 KG (7773)**

This granulate is a vitamin and mineral granulate to be additionally fed to all horse breeds.

Contains doses of minerals, trace elements and vitamins. Suited for maintenance or support before and after hard physical exercise. Moreover, the granulate is excellently suited when the feed mainly or exclusively consists of roughage.

**FEEDING RECOMMENDATION PER 100 KG BODY WEIGHT:**

Maintenance	5 g per day
For a faster recovery or hard physical exercise increase the portion to	10 g
Give the increased portion for max. 14 days.	
Pregnate mare:	10 g

**SPORT RECOVERY + • 4-20 KG (7162)**

This product is the healthy solution for sport horses to quickly recover from sporting effort.

- ✓ It strengthens the immune system
- ✓ Fast regeneration of the muscle tissue
- ✓ Improved overall digestion
- ✓ Better nutrient uptake
- ✓ Less stress

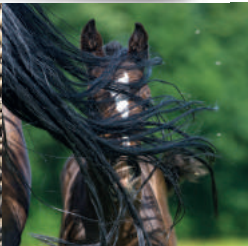
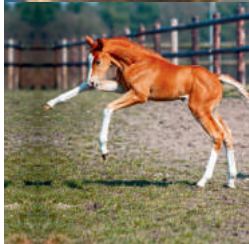
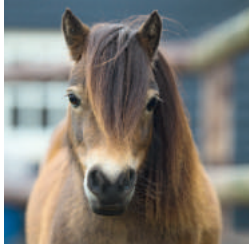
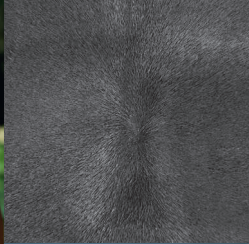
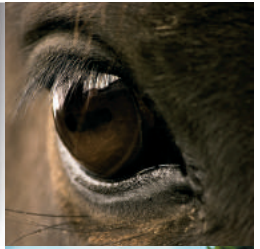
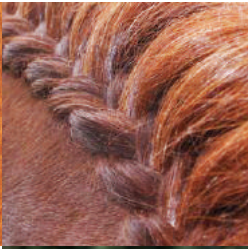
This granulate contains nutrient fibers, antioxidants, B vitamins and organic minerals.

So that your HORSE is HEALTHY and FIT EVERY DAY!

**FEEDING RECOMMENDATION PER 100 KG BODY WEIGHT:**

20 gr. • One measuring cup contains +/- 80 g.







## 9. INDIVIDUAL PRODUCTS

Apart from the mentioned pellets and mixen

**HORSEFOOD 'the best'** has an assortment of several individual products.

### VEULENMELK

- ✓ High-quality milk powder
- ✓ More than 50% skimmed mild powder

### PAARDENZEMELEN

- ✓ For filling the stomach
- ✓ Tasteful

### GEVLOKTE/ GEPLETTE HAVER

- ✓ For additional energy

### GEVLOKTE GERST

- ✓ Easy to take in

### GEVLOKTE MAÏS

- ✓ Energy supplier

### GEPUNTE HAVER

- ✓ For additional energy

### HORSE DINNER (constante kwaliteit ruwvoer)

- ✓ Constant roughage quality
- ✓ Healthy metabolism

### MAÏSMEEL

- ✓ For weight gain

### MINERALENLIKSTENEN (2kg en 5kg)

- ✓ Extra high trace elements and minerals contents
- ✓ Good intake because of added flavourings

## 10. OTHER PRODUCTS

The other products complete horse grooming.

### KOOLZAADSTROVEZEL

- Low-dust stable bedding
- ✓ Good moisture absorption
- ✓ Environmentally friendly
- ✓ Good composting effect

### MSM ZALF

- Skin care ointment
- ✓ Cracks, scurf, itching, insect bites, arthritis, arthrosis and infections

### TKC 100

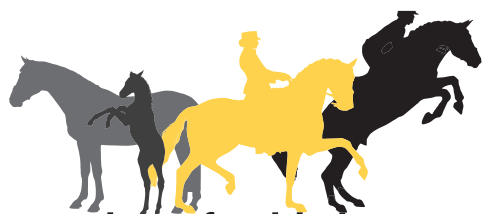
- Insect-repellent spray

### TKC 97

- Lotion for hoses with the summer eczema

### OTHER PRODUCTS

- Anti-Klit, shampoo, hoof fat
- Mineral blocks and holders
- Competition blanket and saddlecloth
- Stable signs



**www.horsefoodthebest.com**



## 11. FEED ADDITIVES

To give your horse the certain something in addition, we offer a great variety of feed additives.

### HEALTH

#### KNOFLOOK GRANULAAT

Garlic Granulate is from European origin and contains Allicin, a sulfur-active substance that is naturally present in Garlic.

- ✓ Enriched with calcium, magnesium and selenium.

#### FEEDING RECOMMENDATION:

Horse & pony	< 300 kg	5 – 10 g per day
Horse	300 – 450 kg	10 - 15 g per day
Horse	450 - 650 kg:	15 - 20 g per day

PACKAGE: 2 KG – 25 KG

#### FOENEGRIEKPOEDER

Fenugreek powder is a feed additive.

- ✓ Easy to feed with the fodder

#### FEEDING RECOMMENDATION:

Horse & pony	< 300 kg	20 g per day
Horse	300 – 400 kg	25 – 30 g per day
Horse	450 - 500 kg:	40 g per day

PACKAGE: 2 KG · 25 KG

#### BIOTINE MIX

Highly concentrated biotin quantity

#### FEEDING RECOMMENDATION:

Horse & pony	< 300 kg	0.5 measuring spoon per day
Horse	300 – 600 kg	1 measuring spoon per day

PACKAGE: 1 KG · 3 KG

#### SUNSET BALANCE KORREL

Cleansing the inside of a horse's body is important.

- ✓ For breaking down waste products in horse bodies
- ✓ Contains selected kieselguhr (diatomaceous earth)
- ✓ Supplementary yeast cultures
- ✓ Rich contents of all trace elements, above all zinc, copper and selenium

Contains 7 strong and functional natural spices

#### FEEDING REC. PER 100 KG BODY WEIGHT:

CLEANSING CURE (20 DAYS) 80 GR PER DAY

PACKAGE: 20 KG

#### BOLKAF MET MELASSE (above all linseed pods)

Ideal to get a high structural value.

- ✓ For filling the stomach
- ✓ Low protein content

PACKAGE: 25 KG



## SPORTS PERFORMANCES/ PHYSICAL DEVELOPMENT

### MSM (ORGANIC SULPHUR )

- ✓ Natural sulphur source
- ✓ Muscle tissue, tendons, joints and hooves

#### FEEDING RECOMMENDATION:

First 90 days:

Horse & pony	< 300 kg	10 - 20 g per day
Horse	300 - 450 kg	20 - 30 g per day
Horse	450 - 650 kg:	35 - 50 g per day

After 90 days: Reduce the quantity by 50%.

PACKAGE: 1 KG · 3 KG

### E SELEEN MIX

- ✓ Antioxidants

#### FEEDING RECOMMENDATION:

Horse & pony	< 300 kg	16 - 18 g per day
Horse	300 - 600 kg	30 - 33 g per day

PACKAGE: 1 KG · 3 KG

### BODYBUILDER

- ✓ For a good and strong muscle building
- ✓ Contains dextrose, amino acids, wheat bran, yeast, algae and linseed oil

#### FEEDING RECOMMENDATION:

First 4 weeks:

Horse & pony	< 300 kg	25 g per day
Horse	300 - 600 kg	50 g per day

After 4 weeks: Reduce the quantity by 50%.

PACKAGE: 1 KG · 3 KG

### ELECTROLYTEN MIX

The Electrolyten-Mix is intended for horses that perform work during high temperatures, have to perform intensively and sweat a lot.

- ✓ Rich in minerals and trace elements

#### RECOMMENDED FEEDING:

Dissolve 50 - 200 g in 10 litres of lukewarm water and, after cooling down, feed to the animal when it is at rest. Can also be fed in dry form with the feed.

PACKAGE: 1 KG · 3 KG

### EASY - MAG MIX

- ✓ Keeps the temperature of the horse under control

#### FEEDING RECOMMENDATION:

Horse & pony	< 300 kg	25 g per day
Horse	300 - 600 kg	50 g per day

PACKAGE: 1 KG · 3 KG

### MSM with GLUCOSAMINE EN CHONDROÏTINE

MSM with glucosamine and chondroitin is a high-quality food supplement supporting a smooth motion sequence. Despite the fact that the body itself produces some of these substances, an additional supply is required in some situations.

- ✓ Cartilage and synovial fluid

#### FEEDING RECOMMENDATION:

In case of trouble during the first month:

5 g per 50 kg body weight

In case of a visible improvement: 30 g per day

PACKAGE: 1 KG · 3 KG









## DIGESTION:

### APPELAZIJN

✓ Contains all the minerals from an appel

#### RECOMMENDED FEEDING:

Always to be mixed with water or to be fed with the feed

Horse & pony < 300 kg	10 - 15 g per animal per day
-----------------------	------------------------------

Horse 300 - 450 kg	12 - 25 g per animal per day
--------------------	------------------------------

Horse 450 - 650 kg	20 - 40 g per animal per day
--------------------	------------------------------

PACKAGE: 2,5 L • 5 L

### ZEEWIER MIX

✓ Great selection of vitamins and minerals

✓ With biotin, calcium, selenium and sodium

#### RECOMMENDED FEEDING:

10 g per 100 kg body weight per day.

Give 20 g as a minimum

PACKAGE: 2 KG • 25 KG

### ZANDVRIJ MIX

✓ Contains psyllium seeds

#### FEEDING RECOMMENDATION:

For 7 to 14 days:

Horse & pony < 300 kg	0.5 measuring spoon per day
-----------------------	-----------------------------

Horse 300 - 450 kg	1 - 2 measuring spoons per day
--------------------	--------------------------------

Horse 450 - 650 kg	3 measuring spoons per day
--------------------	----------------------------

PACKAGE: 1 KG • 3 KG • 10 KG • 25 KG

### PAARDENSNOEPJES

(7686)

HORSEFOOD horse treats are a tasteful and healthy reward for your horse or pony, every day anew!!

The treats are solid such that they do not crumble away fast and horse can chew quite well on them.

No sugar added, with maize, carrots, lucernes, paprika and sunflower oil.

PACKAGE: 1.5 KG • 5 KG • 15 KG



### KRUIDENSNOEPJES

(7695)

HORSEFOOD herb treats are a magnificent herb treat for your horse or pony.

This healthy reward is made up of natural herbs and it is a healthy treat for your animal.

With maize, calcium carbonate, savoury, chamomile, sage, hazelnut leaf, stinging nettle, coriander and marjoram.

Analysis: Crude protein 12.5%, crude fat 2.8%, crude cellulose 13.5%, calcium 2%, phosphor 0.5%, vitamin A, vitamin D3 and vitamin E

PACKAGE: 1,5 KG • 5 KG • 15 KG



12.ANALYSIS OF PELLETS AND MIXEN

The following tables show the feed analyses of both the pellets and the mixtures.  
The values in the tables are to be understood per kilogram of the product. Since mainly natural raw materials are used, the subsequently stated values may be deviating. More feed analyses you'll found on our website.

BROKKEN	BROKSOORTEN HORSEFOOD	ALL-ROUND PAARDENBROK	PRESTATIEBROK	BASIS-SPORTBROK	CONDITIEBROK	JAARLING/ MERRIEBROK	XP-EQ GISTBROK	VEULENKORREL START	MERRIEBROK - BÈTA	KERNMIXBROK	DIGEST CONTROL BROK	REFIT ENERGY BROK	MAIS - LIJNZAADBROK	BIOLOGISCHE PAARDENBROK
ANALYSE	ART.NR.	80	81	82	83	84	85	86	87	90	163	185	335	29513
Energie	MJ	11.6	14.1	12.9	13.5	14.1	14.2	14.7	13.9	11.2	13.1	13.5	15.6	13.1
Ewpa		0.85	0.96	0.90	0.94	0.96	0.98	1.00	0.95	0.77	0.90	0.93	1.09	0.90
VREp	%	8.8	8.7	8.8	8.8	12.0	9.1	13.6	12.4	7.2	10.4	10.0	7.2	9.3
Re	%	11.4	11.4	11.3	11.3	14.5	11.5	16.0	15.0	9.3	13.6	12.8	8.9	11.5
Rv	%	3.0	5.0	3.2	4.0	4.5	4.5	5.3	4.6	4.2	6.5	4.6	6.2	3.1
Rc	%	7.3	7.0	6.9	6.5	6.0	5.2	4.5	5.0	6.5	9.6	6.5	3.7	8.5
As	%	8.4	6.5	7.7	6.7	7.3	6.1	7.0	8.0	21.0	8.5	6.6	2.0	6.7
Zet	%	31.0	39.3	33.2	37.5	36.0	40.5	35.5	35.0	27.0	27.3	34.5	53.1	37.5
Sui	%	5.3	3.7	4.5	4.7	4.6	4.5	5.0	4.5	4.2	4.5	4.6	4.0	4.1
Vit. A	IE	15.000	20.000	14.000	15.000	21.500	20.000	21.500	21.500	45.000	45.000	20.000		15.000
Vit. D3	IE	3.000	4.000	2.500	3.000	4.000	4.000	4.000	4.000	8.000	8.400	4.000		3.000
Vit. E	mg	200	400	250	300	400	400	400	400	750	500	400		150
Vit. B	1,2,6,12	✓	✓	✓	✓	✓	✓	✓	✓	✓	✓	✓		✓
Biotine	mcg	100	150	130	150	205	200	210	210	450	260	200		25
Ca	gr	15.0	8.5	10.5	10.0	10.0	8.0	10.0	11.5	45.0	12.0	8.0	0.8	9.0
P	gr	5.0	6.0	5.0	5.3	5.5	5.3	5.6	6.0	18.0	5.7	6.4	3.0	5.0
Mg	gr	2.6	3.4	3.0	3.4	3.9	3.5	4.2	3.9	9.0	4.4	4.0	1.3	2.5
Na	gr	2.8	3.4	3.0	3.0	3.3	3.2	3.7	3.7	6.2	4.5	3.2	3.0	3.3
Cu	mg	10	16	13	17	32	16	32	32	42	21	17	3	17
Zn	mg	20	130	55	80	160	80	150	140	260	105	80		65
Se	mg	0.15	0.30	0.25	0.30	0.40	0.30	0.40	0.40	0.75	0.50	0.40		0.12
Kruiden			ja			ja		ja	ja	ja				
Bèta	mg								40					

MIXEN	MIXEN HORSEFOOD	SIOBBERMEEL	OMEGA - 3 POWER - MIX	SPEED - MIX	FIT - MIX	EASY - MIX	HAPPY SUMMER - MIX	KRUIDENSTRUKTUUR - MIX	GROW - MIX M&V	GRANENMIX - COMPLEET	GRAANVRIJ - MIX	APPEL - MIX	MULTI BEET SENIOR - MIX	LUNZAAD KANT & KLAAR
ANALYSE	ART. NR.	941	7001	7003	7005	7007	7008	7009	7011	7013	7006	7015	7017	7019
Energie	MJ	15.2	14.1	14.0	12.8	13.3	11.1	13.9	13.4	15.5	10.1	11.4	11.6	17.4
Ewpa		1.05	0.96	0.95	0.87	0.92	0.75	0.95	0.92	1.04	0.68	0.80	0.85	1.18
VR <sub>Ep</sub>	%	8.9	9.0	9.16	9.2	7.8	5.3	9.3	11.7	7.9	8.9	8.8	11.0	12.2
Re	%	11.2	11.3	11.9	11.8	10.2	10.8	11.5	14.3	10.0	13.2	11.6	14.0	16.2
R <sub>v</sub>	%	7.5	6.8	4.2	4.0	5.3	9.8	5.5	4.7	5.8	6.4	2.3	4.5	18.5
R <sub>c</sub>	%	5.4	11.5	12.8	14.2	12.6	20.2	12.1	10.9	9.0	26.5	17.1	17.5	7.1
As	%	5.5	7.4	6.4	6.6	6.8	9.0	6.3	7.6	6.0	9.2	6.9	9.3	4.5
Zet	%	40,1	26.3	30.0	27.5	30.6	7.1	28.2	29.0	38.5	4.8	24.7	7.4	27
Sui	%	2.7	3.0	3.2	3.1	2.9	2.7	3.4	4.2	2.0	3.8	3.2	5.8	1.1
Vit. A	IE	20.000	24.400	18.000	16.800	15.000	35.300	16.500	21.000	21.500	20.000	14.000	27.000	
Vit. D3	IE	1.900	2.700	1.700	1.600	1.400	5.800	1.500	3.400	2.000	3.100	2.100	3.400	
Vit. E	mg	350	450	450	300	250	500	300	400	400	400	200	350	1.200
Vit.B	1,2,6,12	√	√	√	√	√	√	√	√	√	√	√	√	
Biotine	mcg	950	1.350	850	800	700	850	750	950	1.000	1.500	1.000	1.700	
Ca	gr	7.6	11.7	9.3	9.8	9.8	15.0	9.7	11.5	9.4	12.9	8.6	13.9	5.1
P	gr	4.6	5.3	5.0	4.8	4.0	6.0	4.6	5.2	4.7	4.1	3.9	5.4	4.0
Mg	gr	3.5	4.4	3.1	3.0	5.0	4.5	2.7	3.3	2.9	5.9	4.7	7.0	
Na	gr	3.0	3.5	2.5	2.4	2.2	5.1	2.5	2.9	2.7	4.7	2.3	3.8	
Cu	mg	30	42	26	24	22	30	24	30	31	46	32	52	7
Zn	mg	125	170	110	100	90	125	100	125	130	195	130	220	31
Selenium	mg	0.21	0.28	0.17	0.16	0.15	0.35	0.16	0.20	0.20	0.60	0.21	0.35	0.40

## ABBREVIATIONS IN THE ANALYSES

%	=	percent			Rv	=	crude fat	
As	=	inorganic substance	mcg	=	microgram	Sui	=	sugar
Beta	=	beta carotene	Mg	=	magnesium	Vit	=	vitamins
Ca	=	calcium	mg	=	milligram	VREp	=	digestible crude protein horse
Cu	=	copper chelate	Na	=	sodium	Zet	=	starch
EWpa	=	energy value horse	P	=	phosphor	Zn	=	zinc
gr	=	gram	Rc	=	crude cellulose			
IE	=	international units	Re	=	crude protein			

Your **HORSEFOOD 'the best'** authorized dealer/consultant is:

For more than fifty years now, the family business **VAN GORP DIERVOEDERS** has been developing horse feed.

With heart and soul we manufacture the best feed at a reasonable price - for you and your horse.

Our aim is a healthy, powerful and satisfied horse so that we all can say full of price:

**HORSEFOOD 'the best'**

high-grade and  
cost-efficient  
quality .....  
for your  
horse



Ambassadors from **HORSEFOOD 'the best'**:

Hans Peter Minderhoud • Edward Gal • Tim Lips • Emmelie Scholtens • Kirsten Brouwer • Jan de Boer.



21-04



[www.horsefoodthebest.com](http://www.horsefoodthebest.com)